



18 DAYS LUXURY ANTARCTICA EXPEDITION - PUERTO WILLIAMS TO PUERTO WILLIAMS

Spend Christmas exploring the Antarctic wilderness. Bookended by Puerto Williams, you'll start with three days at sea. South Georgia promises snow-covered mountains, giant glaciers and a variety of rare wildlife such as King Penguins. Navigate thrilling Drake Passage and cruise Elephant Island for more remote discovery. The Antarctic Peninsula is an icy paradise with towering glaciers and icebergs, while the Shetland Islands is home to penguins and seals.



ITINERARY

Days 0 - 1 - Pre Cruise & Puerto Williams

- _ **Pre Cruise Benefits** _
- _ **Private Executive Transfers** _
- _ **International flights - Economy class** _
- _ **or Business Class upgrade** _
- _ **Airport transfers** _
- _ **Hotel** _



**In-country flights/Group flights**

Puerto Williams is a Chilean city located on Navarino Island on the southern shores of the Beagle Channel. It claims to be the "southernmost city in the world", however owing to its small size - 2500 residents approximately - the much larger Argentinean city of Ushuaia, which sits on the northern side of the same channel, also claims that title. The surrounding scenery is magnificent. The wild windswept mountains rise above the tree line and are regularly dusted with snow. The city itself has the dramatic backdrop called "Dientes de Navarino" (literally "teeth of Navarino"), which rival the famous Torres del Paine further to the north. The area was originally used by the Yaghan people, hunter-gatherers who despite enduring the harsh regional climate, could not weather the arrival of Europeans. The current city was established as a naval base in 1953 and honours the British-Chilean naval commander John Williams Wilson of the 16th century. Initially it served to protect territorial possessions and fishing rights of the area, as well as offering logistical support to Antarctic bases. More recently it has become a departure point for scientific and tourism trips to the Antarctic region. In contrast to the bustle and traffic of a very commercial Ushuaia, Puerto Williams offers a quieter, more relaxed experience. It charms the visitor with a small village feel, complete with rustic buildings and the homely smell of drifting wood smoke. A haven of peace at the end of the world.

Days 2 - 4 - Day at sea

Days at sea are the perfect opportunity to relax, unwind and catch up with what you've been meaning to do. So whether that is going to the gym, visiting the spa, whale watching, catching

up on your reading or simply topping up your tan, these blue sea days are the perfect balance to busy days spent exploring shore side.

Days 5 - 7 - South Georgia

Charcoal-black mountains ladled with snow, giant glaciers and thriving wildlife combine to make South Georgia one of the great natural islands. Adventure to these far flung lands - where the animals are in charge and humans come a distant second. Here you'll witness a cacophony of calling birds, natural set pieces like elephant seals clashing and thrashing, and crowds of colourful king penguins stretching out as far as the eye can see. An overseas territory of the UK, these isolated, subantarctic islands once formed a remote whaling centre - and you can still visit the former whaling stations. Nowadays the giants of the sea are free to cruise the icy waters uninhibited. Written into explorer history due to its links with Ernest Shackleton's tale of Antarctic exploration, shipwreck and survival, the Endurance's crew were saved when he reached the salvation of these shores in 1916 - before returning to collect the remaining sailors from Elephant Island. A museum commemorates the legendary mission, and you can see the memorial to Shackleton that stands over his final resting place on this fabled island. South Georgia's colonies of king penguins - with vivid bursts of yellow and orange around their necks - stand, squabble and curiously investigate, enjoying the isolated respite of this island. They're joined by smaller penguin species like Macaroni penguins, and other glorious birdlife like the majestic wandering albatrosses, which you can see gliding on gusts of wind, over the choppy waves.

Days 8 - 9 - Drake Passage



Sailing the legendary Drake Passage is an experience that few are ever lucky enough to experience. The southern tip of the Americas already feels like a wild enough environment - but the sensation of watching the distant cliffs of the peninsular known as the 'End of the World' fade into the horizon, is one that's equal parts epic, eerie and magical. Set sail, to slowly drop off the bottom of the map from Cape Horn, and voyage on an expedition down into the icy underworld of Antarctica. Drake Passage is an extraordinary voyage of romantic ocean faring legend, as you aim for Antarctica's icy realm. On arrival, skyscraper sized icebergs salute you, as you traverse the waters of this continent where snow and ice dwelling creatures like penguins and whales roam undisturbed. Your first sight of this most-unexplored place will most likely be the South Shetland Islands. Walk in the footsteps of some of history's greatest and bravest explorers as you explore famed, snow-covered landmasses like Elephant and Deception Island. If the journey across Drake Passage sounds daunting, don't worry - even in rough seas you're never alone, and will often be accompanied on this spine-tingling adventure by soaring albatrosses and maybe even a protective pod of humpbacks and hourglass dolphins or two. Converging warm and cool ocean currents attract some spectacular animal life to the passage. If this is your first visit to this magical continent, you'll also want to familiarise yourself with our blog for first timers to Antarctica.

Day 10 - Elephant Island

Promising thrilling adventure, legendary tales and immaculate Antarctic beauty, Elephant Island is perhaps Antarctica's best-known location. The exploits of its early explorers have immortalised this harsh, monochrome island in the tomes of human history. Believed to take its name from the elephant

seals that early explorers spotted lolling on its rocks, the volcanic island was not properly explored until 1916 - when Ernest Shackleton and his men were stricken by the weather and sought salvation on its shores. Their story of survival, stranded in this barren land, is one of humanity's most evocative and inspiring accounts. Elephant Island is written deep into the legend of Antarctic exploration, and you'll discover Shackleton's tale for yourself as you arrive in the island's icy realm. The remarkable, slowly flowing Endurance Glacier - which you'll see on arrival here - takes its name from their ship, The Endurance. Visit the monument that stands to Shackleton, often surrounded by a migrating crowd of tiny gentoo penguins, at Point Wild - the spot where he and his 28 crew members camped for four and a half months of Antarctic winter. Eventually, Shackleton and a handful of courageous others sailed for South Georgia Island, before returning to secure the rescue of the remaining crew members. Aside from sailing amid breathtaking winter vistas, witnessing incredible fauna and feeling the sheer rush of an adventure to the unknown - one of the true joys of any Antarctic cruise is to follow in the footsteps of the brave explorers who first sought out the alluring nectar of these dangerous, evocative landscapes. If this will be your first-time visiting Antarctica, read our blog explaining how you can prepare for the exploits ahead.

Days 11 - 12 - Antarctic Peninsula

The Antarctic Peninsula unravels upwards towards South America, reaching out a beckoning finger to the adventurous, who dare to explore this untamed realm. Stretching up from the heart of the world's southernmost continent, the Antarctic Peninsula lies a mere 620 mile from Tierra del Fuego and, for many, offers a spectacular first taste of the snow-blanketed



The Small Cruise Ship Collection

www.small-cruise-ships.com

small-cruise-ships.com

info@small-cruise-ships.com

landscapes and colossal ice sculptures, which make up Earth's least-explored continent. Unseen by humans until 1820 - a blink of an eye ago in relative terms - this is an adventure sure to make your hairs stand on end, as you experience the thrill of the truly unknown and extraordinary. The vast peninsula is sprinkled with research bases, which are at the frontline of human scientific endeavour, pushing to study and understand this unique landscape, its exceptional wildlife, and the impact that humans are having on this pristine continent. Witness cathedral-sized icebergs up close, and blue-hued glaciers, slowly slipping from imposing locations like Hope Bay. Blanched mountain peaks cover the peninsula, and you'll find thousands of adorable Adelie penguin pairs thriving undisturbed in this peninsula's unique setting.

Day 13 - South Shetland Islands

The ice-coated Antarctic Peninsula forms perhaps the most accessible region of mainland Antarctica, lying a mere 480-miles away from South America, across the fabled waters of Drakes Passage. Lying close to the northwestern tip of the Antarctic Peninsula, separated by the Bransfield Strait, the South Shetland Islands fall under the jurisdiction of the Antarctic Treaty, suspending claims on their sovereignty. Several countries maintain research bases here, and with plump elephant seals, and crowds of Gentoo, Chinstrap and Adelie Penguins also calling the islands home, it can even feel a little crowded at times. King George Island is the largest and most hospitable island, hosting the majority of the research stations - some of which are populated all-year-round by tiny, hardy crews. Don't be fooled though, these islands offer extraordinary adventure in one of the most remote locations on earth. The triple peaks of Mount Foster tower above the archipelago, and you'll feel your

heart pumping a little quicker, as you sail into the core of Deception Island's magnificent collapsed volcano caldera. Hike the luna landscapes within, and even dip into the improbably warm, geothermally-heated waters of Pendulum Cove. Elephant Island, meanwhile, is written deep into the annals of Antarctic expedition legend, as the site where Ernest Shackleton and the stricken crew of the Endurance miraculously survived a harsh Antarctic winter, in 1916. Discover even more reasons to visit this incredible icy kingdom and find out why many consider the South Shetland Islands to be the jewel in Antarctica's Crown, by reading our blog.

Day 14 - Drake Passage

Sailing the legendary Drake Passage is an experience that few are ever lucky enough to experience. The southern tip of the Americas already feels like a wild enough environment - but the sensation of watching the distant cliffs of the peninsular known as the 'End of the World' fade into the horizon, is one that's equal parts epic, eerie and magical. Set sail, to slowly drop off the bottom of the map from Cape Horn, and voyage on an expedition down into the icy underworld of Antarctica. Drake Passage is an extraordinary voyage of romantic ocean faring legend, as you aim for Antarctica's icy realm. On arrival, skyscraper sized icebergs salute you, as you traverse the waters of this continent where snow and ice dwelling creatures like penguins and whales roam undisturbed. Your first sight of this most-unexplored place will most likely be the South Shetland Islands. Walk in the footsteps of some of history's greatest and bravest explorers as you explore famed, snow-covered landmasses like Elephant and Deception Island. If the journey across Drake Passage sounds daunting, don't worry - even in rough seas you're never alone, and will often be accompanied

The Small Cruise Ship Collection
www.small-cruise-ships.com

01432 507 280 (within UK)

info@small-cruise-ships.com | small-cruise-ships.com



on this spine-tingling adventure by soaring albatrosses and maybe even a protective pod of humpbacks and hourglass dolphins or two. Converging warm and cool ocean currents attract some spectacular animal life to the passage. If this is your first visit to this magical continent, you'll also want to familiarise yourself with our blog for first timers to Antarctica.

Days 15 - 16 - Puerto Williams

Puerto Williams is a Chilean city located on Navarino Island on the southern shores of the Beagle Channel. It claims to be the "southernmost city in the world", however owing to its small size - 2500 residents approximately - the much larger Argentinean city of Ushuaia, which sits on the northern side of the same channel, also claims that title. The surrounding scenery is magnificent. The wild windswept mountains rise above the tree line and are regularly dusted with snow. The city itself has the dramatic backdrop called "Dientes de Navarino" (literally "teeth of Navarino"), which rival the famous Torres del Paine further to the north. The area was originally used by the Yaghan people, hunter-gatherers who despite enduring the harsh regional climate, could not weather the arrival of Europeans. The current city was established as a naval base in 1953 and honours the British-Chilean naval commander John Williams Wilson of the 16th century. Initially it served to protect territorial possessions and fishing rights of the area, as well as offering logistical support to Antarctic bases. More recently it has become a departure point for scientific and tourism trips to the Antarctic region. In contrast to the bustle and traffic of a very commercial Ushuaia, Puerto Williams offers a quieter, more relaxed experience. It charms the visitor with a small village feel, complete with rustic buildings and the homely smell of drifting wood smoke. A haven of peace at the end of the world.

Day 17 - Post Cruise

- _ ****Post Cruise Benefits**** _
- _ ****In-country flights/Group flights**** _
- _ ****Hotel**** _
- _ ****Airport transfers**** _
- _ ****International flights - Economy class**** _
- _ ****or Business Class upgrade**** _
- _ ****Private Executive Transfers**** _

Please note:

Itineraries are subject to change.



The Small Cruise
Ship Collection

www.small-cruise-ships.com



small-cruise-ships.com

info@small-cruise-ships.com

YOUR SHIP: SILVER CLOUD

YOUR SHIP:

Silver Cloud

VESSEL TYPE:

LENGTH:

PASSENGER CAPACITY:

BUILT/REFURBISHED:

With 18-brand new Zodiacs, four superlative restaurants in Antarctica and a pole to pole expedition itinerary, Silver Cloud really does break the ice between expedition and luxury. Spacious yet intimate, designed to cross oceans and yet able to slip up rivers and into hidden harbours with ease, the yacht-like Silver Cloud carries just 296 guests in incomparable comfort and style. Combining spacious ocean-view suites and private verandas with stunning dining and entertainment options, Silver Cloud provides world-class cruise accommodations, service and amenities. After extensive refurbishment, Silver Cloud is the most spacious and comfortable ice class vessel in expedition cruising. Her large suites, her destination itineraries and her unparalleled service make her truly special. Her four dining options will tantalise your taste buds and as 80% of her suites include a veranda, watching a breaching whale or a few cavorting penguins has never been so personal. She carries a limited number of guests in polar waters, meaning that Silver Cloud has the highest space to guest and crew to guest ratios in expedition cruising. With her 18 zodiacs, 10 kayaks, possibilities are almost limitless with ship-wide simultaneous explorations.



The Small Cruise
Ship Collection

www.small-cruise-ships.com

01432 507 280 (within UK)

info@small-cruise-ships.com | small-cruise-ships.com



The Small Cruise Ship Collection

www.small-cruise-ships.com



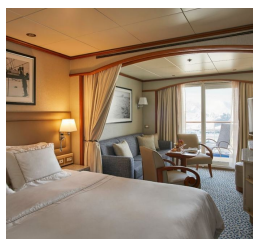
small-cruise-ships.com

info@small-cruise-ships.com

INSIDE YOUR SHIP

Grand 1 Bedroom

Medallion



Grand 2 Bedroom

Midship Veranda

Owner 1 Bedroom

Royal 1 Bedroom

Silver



Vista

Owner 2 Bedroom

Royal 2 Bedroom

Veranda



The Small Cruise Ship Collection

www.small-cruise-ships.com



small-cruise-ships.com

info@small-cruise-ships.com

PRICING

06-Feb-2026 to 22-Feb-2026

Owner 2 Bedroom	£53499 GBP pp
Royal 2 Bedroom	£51105 GBP pp
Owner 1 Bedroom	£38865 GBP pp
Silver	£30705 GBP pp
Grand 1 Bedroom	£35905 GBP pp
Grand 2 Bedroom	£53805 GBP pp
Medallion	£28459 GBP pp
Vista	£16269 GBP pp
Royal 1 Bedroom	£33205 GBP pp

19-Oct-2026 to 04-Nov-2026

Royal 2 Bedroom	£44525 GBP pp
Owner 1 Bedroom	£37335 GBP pp
Grand 1 Bedroom	£29275 GBP pp
Royal 1 Bedroom	£25555 GBP pp
Grand 2 Bedroom	£47435 GBP pp
Owner 2 Bedroom	£50035 GBP pp
Silver	£24075 GBP pp
Medallion	£18719 GBP pp
Vista	£12955 GBP pp

08-Nov-2026 to 24-Nov-2026

Silver	£24889 GBP pp
Midship Veranda	£18669 GBP pp
Royal 2 Bedroom	£41159 GBP pp
Veranda	£16325 GBP pp
Owner 1 Bedroom	£38559 GBP pp
Grand 1 Bedroom	£30195 GBP pp
Royal 1 Bedroom	£26469 GBP pp
Medallion	£19385 GBP pp
Vista	£13619 GBP pp
Owner 2 Bedroom	£50799 GBP pp
Grand 2 Bedroom	£44885 GBP pp



The Small Cruise Ship Collection

www.small-cruise-ships.com

01432 507 280 (within UK)

info@small-cruise-ships.com | small-cruise-ships.com



The Small Cruise Ship Collection

www.small-cruise-ships.com



small-cruise-ships.com

info@small-cruise-ships.com

PRICING

23-Nov-2026 to 09-Dec-2026

Royal 1 Bedroom	£26469 GBP pp
Silver	£24889 GBP pp
Midship Veranda	£18669 GBP pp
Veranda	£16325 GBP pp
Grand 1 Bedroom	£30195 GBP pp
Medallion	£19385 GBP pp
Owner 2 Bedroom	£50799 GBP pp
Grand 2 Bedroom	£44885 GBP pp
Royal 2 Bedroom	£41159 GBP pp
Owner 1 Bedroom	£38559 GBP pp
Vista	£13619 GBP pp

21-Dec-2026 to 06-Jan-2027

Grand 2 Bedroom	£47435 GBP pp
Royal 2 Bedroom	£44525 GBP pp
Owner 1 Bedroom	£40905 GBP pp
Grand 1 Bedroom	£31875 GBP pp
Vista	£14285 GBP pp
Owner 2 Bedroom	£50035 GBP pp
Royal 1 Bedroom	£27795 GBP pp
Silver	£26065 GBP pp
Medallion	£20095 GBP pp

17-Jan-2027 to 02-Feb-2027

Grand 2 Bedroom	£56355 GBP pp
Owner 1 Bedroom	£51919 GBP pp
Royal 1 Bedroom	£34885 GBP pp
Silver	£32695 GBP pp
Midship Veranda	£20505 GBP pp
Vista	£15149 GBP pp
Veranda	£17905 GBP pp
Royal 2 Bedroom	£51005 GBP pp
Owner 2 Bedroom	£65535 GBP pp
Grand 1 Bedroom	£40239 GBP pp
Medallion	£24995 GBP pp



The Small Cruise Ship Collection

www.small-cruise-ships.com

01432 507 280 (within UK)

info@small-cruise-ships.com | small-cruise-ships.com



The Small Cruise Ship Collection

www.small-cruise-ships.com



small-cruise-ships.com

info@small-cruise-ships.com

PRICING

11-Feb-2027 to 27-Feb-2027

Owner 2 Bedroom	£61865 GBP pp
Veranda	£16835 GBP pp
Vista	£14079 GBP pp
Grand 2 Bedroom	£53295 GBP pp
Owner 1 Bedroom	£49215 GBP pp
Royal 2 Bedroom	£48249 GBP pp
Midship Veranda	£19279 GBP pp
Grand 1 Bedroom	£38149 GBP pp
Royal 1 Bedroom	£33099 GBP pp
Silver	£31009 GBP pp
Medallion	£23715 GBP pp



The Small Cruise Ship Collection

www.small-cruise-ships.com

01432 507 280 (within UK)

info@small-cruise-ships.com | small-cruise-ships.com