



The Small Cruise  
Ship Collection

[www.small-cruise-ships.com](http://www.small-cruise-ships.com)

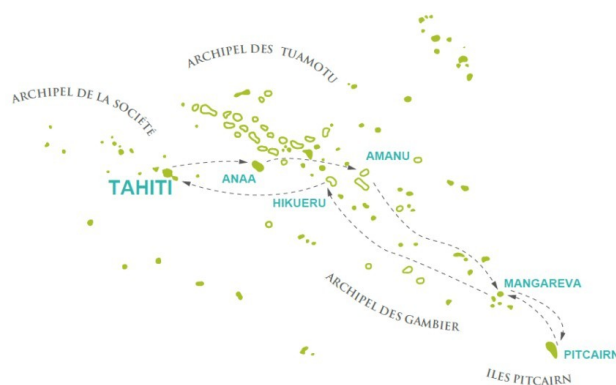


[small-cruise-ships.com](http://small-cruise-ships.com)

[info@small-cruise-ships.com](mailto:info@small-cruise-ships.com)

## CRUISE IN THE PITCAIRN ISLANDS: MEETING THE DESCENDANTS OF THE BOUNTY MUTINEERS

Meeting the descendants of the bounty mutineers Located in the dazzling blue Pacific waters between Tahiti and Easter Island, the tiny, remote island of Pitcairn is thousands of kilometres from the nearest continent and so isolated that it is only accessible by sea. It all started in 1767. Two Englishmen called Wallis and Carteret were commissioned by the Admiralty to 'discover' the southern continent in the vast Pacific Ocean and became the first Europeans to reach the island of Tahiti. Later the same year, as they rounded Cape Horn, a storm separated Wallis' ship, 'the Dolphin', from commander Philip Carteret's ship, the Swallow. As the 'Swallow' headed north, on July 2nd, 1767, seaman Robert Pitcairn spotted a high island. But the swell was too strong, the sky too dark, and the English ship couldn't get close. Even the position Carteret recorded for the island wasn't accurate. The name of its "discoverer", Pitcairn, was nevertheless given to the island, as tradition required. 20 years went by before it gained lasting notoriety in the story of the mutineers of the Bounty. With all the capabilities of a freighter, the Aranui 5 offers a new, elegant and comfortable way to visit the island. Located on the smallest British territory, Pitcairn has a population of just 50 people. These are the descendants of the first European settlers on Pitcairn, the mutineers of HMS Bounty and their Polynesian companions. Visitors to this isolated island at the edge of the world can mingle with these local families and discover the culture and history of the island as it is lived today. If you are looking for an adventure that gives meaning to the expression "off the beaten path", this is the faraway paradise you might be seeking.



### ITINERARY

Day 1 Departure from Tahiti (Papeete) - Moorea

At the Papeete Cruise Terminal, passengers embark in a typically Polynesian floral and musical atmosphere. Wreaths, ukuleles and smiles punctuate this moment, while the mountains of Tahiti slowly fade away, giving way to adventure in the Pacific.

Day 2 Anaa (Tuamotu islands)

A former stronghold of the Pomare family, Anaa boasts a jade lagoon, white sand motus and impressive coral feo. Inhabitants make their living from fishing and copra, in a sustainable way. Visitors to Tukahora can explore the village on foot or by bus. Fly-fishing is available in the shallow lagoon. A picnic awaits you on the beach. Optional: swimming at the "Ogoogo" pito,



The Small Cruise  
Ship Collection

[www.small-cruise-ships.com](http://www.small-cruise-ships.com)

01432 507 280 (within UK)

[info@small-cruise-ships.com](mailto:info@small-cruise-ships.com) | [small-cruise-ships.com](http://small-cruise-ships.com)



## The Small Cruise Ship Collection

[www.small-cruise-ships.com](http://www.small-cruise-ships.com)



[small-cruise-ships.com](http://small-cruise-ships.com)

[info@small-cruise-ships.com](mailto:info@small-cruise-ships.com)

excursions to Temarie and Putuahara, or a bike ride.

### Day 3 Amanu (Tuamotu islands)

Between crystal-clear lagoons, coconut palms and a friendly village, you'll be welcomed to Ikitake by children's dances and wreaths of flowers. On the program: shell crafts, old lighthouse, Saint-Paul churches, fish park and coral building from the XIX century. Under the century-old "Tou", enjoy a local buffet to the sound of traditional music. Don't forget: sun cream (SPF 40+), sunglasses, hat, light clothing and swim sandals.

### Day 4 At Sea

Relax on the Pool Deck or in the air-conditioned Lounge while enjoying views of the South Pacific Ocean. Lectures on Pitcairn Island culture reveal the fascinating history of the descendants of the Bounty mutineers. In the evening, enjoy a convivial evening in the bar with your fellow passengers. The Polynesian crew proudly share their way of life to the sound of ukuleles, guitars and drums.

### Day 5 Mangareva (Rikitea - Gambier islands)

Rikitea, capital of the Gambiers archipelago, welcomes you to the shores of a blue-green lagoon renowned for its black pearls. Enjoy a flowery welcome and a tasting of local specialties at the Karorua quay. Don't miss the renovated Saint-Michel cathedral, adorned with mother-of-pearl, the symbol of Polynesian Catholicism. Lunch served on board before departure for Pitcairn.

### Day 6 Pitcairn

Two centuries after the famous landing, the Aranoa drops anchor in Bounty Bay, in the heart of one of the world's most isolated islands. Passengers discover Adamstown, meet descendants of the mutineers at the local market, visit the Bounty Museum and the grave of John Adams. You'll share a picnic lunch in the village with its authentic inhabitants. Tips: non-slip shoes, rain protection and plenty of water recommended.

### Day 7 Pitcairn

On the second day, enjoy free time in the village or a walk to the "Highest Point", the highest point in the territory. Lunch will be served on board and return to the village of Rikitea in Mangareva.

### Day 8 Mangareva (Rikitea - Gambier islands)

In Karorua, the "PE'I" dance show welcomes you. By truck or on foot, explore the island's key sites: the College Saint-Raphael, which introduces young people to mother-of-pearl engraving, and for the adventurous, a hike to the belvedere and the tomb of the kings.

Lunch on board, followed by an afternoon of relaxation and swimming at Teauopapa.

### Day 9 At Sea

Enjoy a peaceful day on the Pool Deck or in the comfort of the air-conditioned Lounge, while admiring the South Pacific Ocean. Enriching lectures and activities punctuate this trip to Hikueru.



The Small Cruise Ship Collection

[www.small-cruise-ships.com](http://www.small-cruise-ships.com)

**01432 507 280** (within UK)

[info@small-cruise-ships.com](mailto:info@small-cruise-ships.com) | [small-cruise-ships.com](http://small-cruise-ships.com)





The Small Cruise  
Ship Collection

[www.small-cruise-ships.com](http://www.small-cruise-ships.com)



[small-cruise-ships.com](http://small-cruise-ships.com)

[info@small-cruise-ships.com](mailto:info@small-cruise-ships.com)

#### Day 10 Hikueru

A former Tuamotu pearl reserve, Hikueru was marked by the cyclone of 1903, recounted by Jack London in South Sea Tales. Now a copra-growing island, Hikueru welcomes you to the marina to the sound of music and wreaths of flowers. By truck or on foot, visit the village and the abandoned church of Saint-Michel, the tallest in the Tuamotus. You can rent a bike to explore the island at your own pace. Listen to local legends told by the locals.

Lunch on board before returning to the Society Islands.

#### Day 11 At sea

A day to recover from your emotions. On our way to Papeete, you'll be able to take part in a number of conferences and activities throughout the day.

#### Day 12 Back to Tahiti (Papeete)

This is the end of our journey. It is time to say N n ! (goodbye) to your fellow travellers, the Polynesian staff and the Aranoa guides.

#### Please Note:

Itineraries are subject to change.



The Small Cruise  
Ship Collection

[www.small-cruise-ships.com](http://www.small-cruise-ships.com)

**01432 507 280** (within UK)

[info@small-cruise-ships.com](mailto:info@small-cruise-ships.com) | [small-cruise-ships.com](http://small-cruise-ships.com)



## The Small Cruise Ship Collection

[www.small-cruise-ships.com](http://www.small-cruise-ships.com)



[small-cruise-ships.com](http://small-cruise-ships.com)

[info@small-cruise-ships.com](mailto:info@small-cruise-ships.com)

### YOUR SHIP: ARANOA

<b>YOUR SHIP:</b>	<b>Aranoa</b>
<b>VESSEL TYPE:</b>	<b>Small Ship</b>
<b>LENGTH:</b>	<b>116 m</b>
<b>PASSENGER CAPACITY:</b>	<b>198</b>
<b>BUILT/REFURBISHED:</b>	<b>2026</b>

promote inter-island trade and cultural exchange, creating meaningful connections between travellers and the islands. Blending discovery, comfort, and responsibility, Aranoa invites guests to experience a slower, more authentic Polynesia--where every voyage

tells a story.

Launching in 2027, Aranoa marks an exciting new chapter for Aranui Cruises, extending its legacy of authentic and sustainable Polynesian voyages. This innovative mixed passenger-freighter vessel will journey through the remote Austral Islands--Rimatara, Rurutu, Tubuai, Raivavae, and Rapa--offering guests an intimate connection to some of French Polynesia's most unspoiled destinations. With capacity for just 198 passengers across 93 cabins, including 62 with private balconies, Aranoa promises a boutique cruising experience complemented by Polynesian warmth and hospitality. Onboard amenities include two restaurants, two bars, whirlpools, a spa and tattoo area, a boutique, and a fitness centre, ensuring both comfort and cultural immersion as guests explore the lush mountains, turquoise lagoons, and white-sand beaches of the Australs. True to Aranui's pioneering spirit, Aranoa combines tradition with forward-thinking sustainability. The ship features a diesel-electric propulsion system with azimuth thrusters, an eco-friendly antifouling hull coating, and technology designed to reduce noise and emissions while enhancing fuel efficiency. Continuing the company's 40-year commitment to inclusive tourism, Aranoa will work closely with local communities to



The Small Cruise Ship Collection

[www.small-cruise-ships.com](http://www.small-cruise-ships.com)

**01432 507 280** (within UK)

[info@small-cruise-ships.com](mailto:info@small-cruise-ships.com) | [small-cruise-ships.com](http://small-cruise-ships.com)



## The Small Cruise Ship Collection

[www.small-cruise-ships.com](http://www.small-cruise-ships.com)

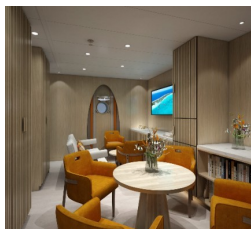


[small-cruise-ships.com](http://small-cruise-ships.com)

[info@small-cruise-ships.com](mailto:info@small-cruise-ships.com)

## INSIDE YOUR SHIP

Class C



Deluxe

Grand Royal Suite

Owner Suite

Presidential Suite

Stateroom

Junior Suite

Premium Suite

Royal Suite

Superior Deluxe



The Small Cruise Ship Collection

[www.small-cruise-ships.com](http://www.small-cruise-ships.com)

**01432 507 280** (within UK)

[info@small-cruise-ships.com](mailto:info@small-cruise-ships.com) | [small-cruise-ships.com](http://small-cruise-ships.com)





## The Small Cruise Ship Collection

[www.small-cruise-ships.com](http://www.small-cruise-ships.com)



[small-cruise-ships.com](http://small-cruise-ships.com)

[info@small-cruise-ships.com](mailto:info@small-cruise-ships.com)

## PRICING

### 21-Jul-2027 to 01-Aug-2027

Class C	£3609 GBP pp
Junior Suite	£7905 GBP pp
Premium Suite	£8375 GBP pp
Royal Suite	£8815 GBP pp
Grand Royal Suite	£10619 GBP pp
Stateroom	£5645 GBP pp
Superior Deluxe	£7775 GBP pp
Owner Suite	£11135 GBP pp
Presidential Suite	£11135 GBP pp
Deluxe	£7205 GBP pp

### 08-Sep-2027 to 19-Sep-2027

Class C	£3609 GBP pp
Junior Suite	£7905 GBP pp
Premium Suite	£8375 GBP pp
Royal Suite	£8815 GBP pp
Grand Royal Suite	£10619 GBP pp
Stateroom	£5645 GBP pp
Deluxe	£7205 GBP pp
Superior Deluxe	£7775 GBP pp
Owner Suite	£11135 GBP pp
Presidential Suite	£11135 GBP pp